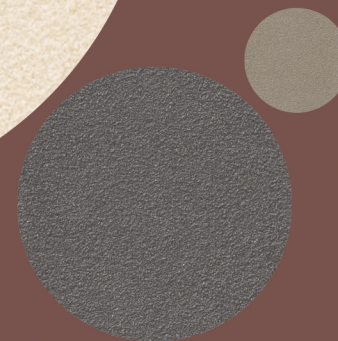


VELBON

VITRIFIED



Collection

2024

600X
600MM | 15
MM

VELBON

VITRIFIED

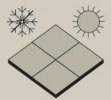
FULLBODY
TILES

600X
600MM

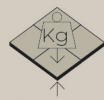
THICKNESS  15MM

EXCEPTIONAL SHADE
AMAZES EVERYONE

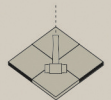
FEATURES



- Weather resistant.



- High tensile strength.



- Stress-resistant.



- Frost and fire-resistant.





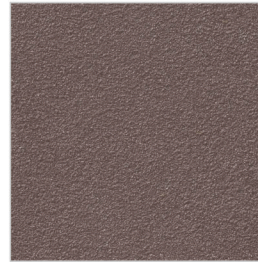
DENSE LUX

VELBON

VITRIFIED

FULLBODY

TILES



DENSE COFFEE



DENSE CREMA



DENSE LUX



DENSE GREY



DENSE NEGRO



DENSE SAHARA



DENSE VERDE

600X600MM
15MM THICKNESS

SURFACES
SATIN / RUSTIC



DENSE SAHARA

TECHNICAL SPECIFICATION

| Dimension and Surface Quality | Test Method | Require | Result |
|-------------------------------------|---------------|---------|---------|
| Deviation in Length (l) & Width (w) | ISO 10545 - 2 | ± 1mm | 0.00 mm |
| Thickness | ISO 10545 - 2 | ± 0.5mm | 0.00 mm |
| Straightness of sides | ISO 10545 - 2 | ± 0.8mm | 0.09 mm |
| Rectangularity | ISO 10545 - 2 | ± 1.5mm | 0.11 mm |

Physical Property

| | | | |
|--|----------------|------------------------|--------------------------------------|
| Water Absorption % | ISO 10545 - 3 | Less then 0.5 | 0.044 % |
| Breaking Strength | ISO 10545 - 4 | | 7194.95 N |
| Modulus of Rupter (MOR)N/mm ² | ISO 10545 - 4 | 35 | 49.06 N/mm ² |
| Resistance to surface abrasion | ISO 10545-7 | | PEI Class - III 1500 Revolution pass |
| Coefficient of Liner Thermal Expansion | ISO 10545 - 8 | 9X10-6 Max | 5.51x10-6 |
| Thermalshock Resis | ISO10545 - 9 | 10 Cycle, Min | Confirm |
| Crazing Resistance | ISO 10545-11 | No Crazin in Two Cycle | Confirm |
| Moisture Expansion (in mm/mm) | ISO 10545 -10 | 0.02 mm/m max | 0.01 mm/m max |
| Impact resistance | ISO 10545 - 5 | 0.55 Min | 0.78 |
| Scrach hardness of Srface | ISO 13630 - 13 | 5 moh's scal | 5 Moh's |
| Bulk density, lin (g/cc) | ISO 10545 - 3 | 2.2 m'n | 2.2903 glcc |

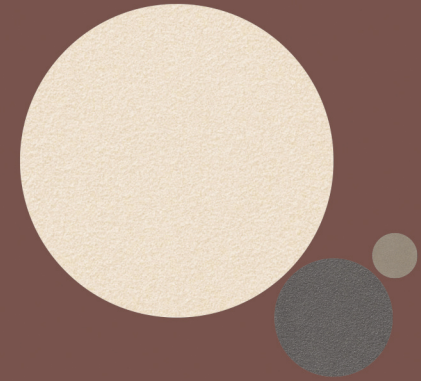
Chemical Property

| | | | |
|--|--------------|---------------|-----------|
| Resistance to Stain | ISO 10545-14 | Min Class - 3 | Class - 5 |
| Resistance to Low Concentration of acid and alkali | ISO 10545-13 | Min Class-GLC | Class GLA |

Packaging Details:

| SIZE | THICKNESS | FINISH |
|-----------|-----------|--------|
| 600x600mm | 15MM | Matt |

| AVG WEIGHT | NO. TILES/BOX | COVERAGE /BOX |
|------------|---------------|----------------------------|
| 25 | 2 pcs | 0.72 sq. mtr 7.75 sq ft |



VELBON
VITRIFIED

VELBON VITRIFIED LLP

Unchi Mandal Village, Halvad Road,
Morbi, Gujarat

www.velbonvitrified.com
velbonvitrified@gmail.com